



Learn more about your new vehicle

Scan the country-appropriate QR code with your smartphone (make sure you have a scanner app installed) and you can access even more information about your vehicle.



fordowner.com (U.S.)



ford.ca (Canada)



This Quick Reference Guide is not intended to replace your vehicle Owner's Manual which contains more detailed information concerning the features of your vehicle, as well as important safety warnings designed to help reduce the risk of injury to you and your passengers. Please read your entire Owner's Manual carefully as you begin learning about your new vehicle and refer to the appropriate chapters when questions arise. All information contained in this Quick Reference Guide was accurate at the time of duplication. We reserve the right to change features, operation and/or functionality of any vehicle specification at any time. Your Ford dealer is the best source for the most current information. For detailed operating and safety information, please consult your Owner's Manual.



WARNING: Driving while distracted can result in loss of vehicle control, crash and injury. We strongly recommend that you use extreme caution when using any device that may take your focus off the road. Your primary responsibility is the safe operation of your vehicle. We recommend against the use of any hand-held device while driving and encourage the use of voice-operated systems when possible. Make sure you are aware of all applicable local laws that may affect the use of electronic devices while driving.




United States
Ford Customer Relationship Center
1-800-392-3673 (FORD)
(TDD for the hearing impaired:
1-800-232-5952)
fordowner.com

Canada
Ford Customer Relationship Centre
1-800-565-3673 (FORD)
ford.ca
Follow us on Twitter:
[@FordServiceCA](https://twitter.com/FordServiceCA)

COMMONLY USED SYNC® COMMANDS

TABLE OF CONTENTS

Touch the voice button  on the steering wheel and then say:



Entertainment

- Audio list of commands: You can also get detailed lists of commands for radio, USB, Bluetooth® audio, SiriusXM and SD card*
- Radio
 - <On/Off>
 - FM <#7.9-107.9>
 - FM preset <#>
- CD
 - Play track <1-512>
 - Shuffle <On/Off>
- USB
 - Play song <name>
 - Play album <name>
- SiriusXM
 - <Channel name>
 - Preset <#>



Basic Commands

- What can I say?
- List of commands
- Main menu
- Previous
- Next
- Go back
- Exit
- Help
- Pair my phone



Phone

- Phone list of commands
 - Dial
 - Call <name> on cell/ at home/at work
 - Call voicemail
 - Do not disturb <On/Off>
 - Listen to text messages (phone-dependent feature)



Navigation*

- Navigation list of commands
 - Destination street address <number, name, city>
 - Destination home
 - Navigation voice <On/Off>
 - Navigation voice volume <increase/decrease>
 - Repeat instruction
 - Show <map/north-up/heading-up/3D>
- Travel Link list of commands
 - Traffic
 - Weather
 - Movie listings
 - Fuel prices
 - Sports <headlines/scores/schedule>



Climate*

- Climate control list of commands
 - Climate <On/Off>
 - Climate my temperature
 - Climate temperature

Some features may not be available in Canada. Refer to your Owner's Manual, visit the website or call the toll-free number for more information.

For U.S. customers: Visit SyncMyRide.com or call 1-800-392-3673 (select Option 1 or 2 for language, then Option 3).

For Canadian customers: Visit SyncMyRide.ca or call 1-800-565-3673 (select Option 1 or 2 for language, then Option 3).



Instrument Panel	4-5
SYNC	6-7
SYNC with MyFord Touch	8-10
Convertible Top	11
Comfort/Function	12
Function	13
Essential Features	14-15



I N S T R U M E N T P A N E L

1 Lighting Control

- Switches off the headlamps.
- ⊞ Switches on the parking, instrument panel, license plate and tail lamps.
- ⊞ Switches on the headlamps.
- ⊞ Autolamps* automatically switch the exterior lamps on or off based on available daylight.
- ⊞ Switch the fog lamps* on or off by pressing the control.

2 Cruise Control

Lets you maintain a set speed without keeping your foot on the accelerator pedal. You can use cruise control when your vehicle speed is greater than 20 mph (30 km/h).

To use, accelerate to the desired speed. Press and release **SET+**, then take your foot off of the accelerator pedal.

Adaptive cruise control* automatically adjusts your speed to maintain a set distance between your vehicle and the vehicle in front of you in the same lane. You can set the gap distance between your vehicle and the vehicle in front of you by pressing the **SET+** and **SET-** buttons on the steering wheel.

Note: Driving aids do not replace the need to watch where the vehicle is moving and brake where necessary. Refer to the **Cruise Control** chapter of your **Owner's Manual** for safety information, more details and limitations.



3 Information Display

Provides information about various systems on your vehicle. Use the left-hand, 5-way controls located on the steering wheel to choose and confirm settings and messages. Refer to the **Information Displays** chapter of your **Owner's Manual** for more information.

4 Service Engine Soon Light

Lights briefly when you switch the ignition on. If it remains on or is blinking after you start the engine, the On-Board Diagnostics (OBD-II) system has detected a malfunction. Drive in a moderate fashion (avoid heavy acceleration and deceleration) and contact an authorized dealer as soon as possible.

5 Push-button Start

Allows you to start your vehicle by pressing the **ENGINE START STOP** button while fully pressing down on the brake pedal. If your vehicle has been idling for an extended period of time, it will

automatically shut down. Before the engine shuts down, a message appears in the information display, allowing the driver to override the shutdown feature. Press the button again to switch the engine off.

Note: Your intelligent access transmitter must be inside the vehicle for the ignition to start. Keyless warning alert sounds the horn twice when you exit the vehicle with the intelligent access transmitter and the keyless vehicle is in RUN, indicating the vehicle is still on.

6 Steering Wheel Media Controls

Press **VOL+** or **VOL-** to increase or decrease volume levels.

Press **⏮** or **⏭** to access the previous or next radio station, CD track or preset satellite radio channel.

Press **M** repeatedly to access all possible media sources.

Press **☎** to access SYNC* voice recognition*.

Press **📞** to access SYNC phone features or to answer a call.

Press **📞** to end a call.

SYNC®

SYNC is a hands-free, voice recognition system used for entertainment, information and communication. SYNC. Say the Word.

Before You Get Started


1. Set up your owner account at SyncMyRide.com (U.S.) or SyncMyRide.ca (Canada). Register by following the on-screen instructions. After registering you can see what complimentary services you are eligible for.
2. SYNC uses a wireless connection called Bluetooth® to communicate with your phone. Switch Bluetooth mode on in your phone's menu options. This lets your phone find SYNC. If you need more details on setting up your phone to work with SYNC, visit SyncMyRide.com (U.S.) or SyncMyRide.ca (Canada), or your phone manufacturer's website.

Pairing Your Phone with SYNC

In order to use many of the features of SYNC such as making a phone call, receiving a text or using SYNC Services, you must first connect or pair your phone with SYNC.

To pair your phone for the first time

1. Make sure your vehicle is in park (P) (automatic transmission) or 1 (manual transmission), and you switch the ignition and radio on.

2. Press the phone button . When the display indicates no phone is paired, press the **Settings** tab, then **Add**.
3. If **Bluetooth** is on, SYNC begins the pairing process between your Bluetooth-enabled phone or device and SYNC. See your phone's user guide, if necessary.
4. When prompted on your phone's display, enter the PIN provided by SYNC into your phone.
5. The display will indicate when the pairing is successful.

The system may prompt you to

- » Set your phone as the primary or favorite (the primary phone will receive messages and voicemail).
- » Download your phone book (this is required to use the full set of voice commands).
- » Switch on 911 Assist*.

Tips

- » Make sure you accept the request from SYNC to access your phone.
- » To pair subsequent phones, please refer to **Pairing Subsequent Phones in the SYNC** chapter of your Owner's Manual.
- » If you are experiencing pairing problems, try performing a clean pairing by deleting your services from SYNC, deleting the SYNC connection from your phone and then repeating the **Pairing Your Phone with SYNC** process.

Why Do You Need a SYNC Owner Account?

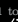
A SYNC owner account gives you the latest software updates that add new places, directions and information; and if you have questions, you'll get free customer support.

Note: Your SYNC system may offer advanced features such as AppLink™. Some services may not be available in your area. Visit the website or call the toll-free number for more information. See the inside front cover of this guide for details.

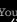
Using Your Phone with SYNC

Note: You must download your phone book to make phone calls with voice commands by name.

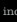

Making a phone call

Use SYNC to make a phone call to anyone in your phone book by pressing the voice button . When prompted, say a voice command.

For example, you could say "Call Jake Smith at home". When the system confirms the number, say "Dial" again to initiate the call.

Note: You can also make phone calls by pressing the voice button  and when prompted, give the voice command "Dial", then verbally say the phone number.

Answering incoming calls

Whenever you have an incoming call, you will be able to see the name and number of the person calling in the display. Press the phone button  to answer an incoming call. You can hang up at any time by pressing the  button.

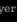
Do not disturb mode

This feature blocks incoming calls and text messages and saves them for later. You still have access to outgoing calls when this feature is active. Say the voice command "Do not disturb on" to enable and "Do not disturb off" to disable.

Using SYNC to Access Digital Media

Plug in your USB media devices such as phones and MP3 players, and use SYNC to play all of your favorite music.

Using voice commands to play music

1. Plug your media player into your USB port.
2. Press the voice button . When prompted, say "USB", then follow up by saying a voice command.

SYNC® WITH MYFORD TOUCH®*

A Revolutionary Way to Connect with Your Vehicle

Use the four-corner, four-color touchscreen to explore and interact with your vehicle. The touchscreen works the same way as traditional controls, knobs and buttons do. Press the various corners on your touchscreen to personalize the many features and settings of your vehicle all in one place. The system provides easy interaction with your cellular phone, multimedia entertainment, climate controls and navigation system*.

General tips

- » Press the home icon at any time to return to your home screen or use the voice command "Go back".
- » Press the desired icon on the sensitive touchscreen accurately and firmly.
- » Refer to your **Owner's Manual**, visit the website or call the toll-free number for more information. See the inside front cover of this guide for details.

Before you get started

- » Pair your phone to SYNC.
- » Make sure to insert your navigation SD card* into the media port (located in the center console) or your navigation features will not work.



To pair your phone

- » Touch **Add Phone** on your touchscreen.
- » Set **Bluetooth ON** and put your cellular phone in the proper mode.
- » Select SYNC and a six-digit PIN appears on your device.
- » If the system prompts you to enter a PIN on your device, it

does not support Secure Simple Pairing. To pair, enter the PIN displayed on the touchscreen.

- » When prompted on your phone's display, confirm that the PIN provided by SYNC matches the PIN displayed on your cellular phone.

» The display will indicate when pairing is successful.

**if equipped*

Get in Touch Using Your Four-corner Touchscreen

Phone, Navigation*, Climate and Entertainment are the four main features of SYNC with MyFord Touch. Each feature has its own corner represented by its own color.

Phone

Voice-control your phone for hands-free calling with your phone securely put away. With SYNC, you won't even need to know the phone number. Just say the name of the person you want from your contacts.

Your phone connects you with many other features:

- » Automatically connect to a 911 Operator in the event of an accident (you need to activate this feature prior to the event).
- » Transfer calls seamlessly from SYNC to phone as you get in or out of your vehicle.

Refer to the **MyFord Touch** chapter of your **Owner's Manual** for complete details.

**if equipped*

Navigation*




Press the upper-right, green corner to access features within your available, voice-activated navigation system:

- » SiriusXM Traffic™
- » Sirius Travel Link™
- » GPS (Global Positioning System) technology
- » 3-D mapping
- » Turn-by-turn navigation

Some features may require activation. Refer to the **MyFord Touch** chapter of your **Owner's Manual** for complete details.

Set a destination

Set a destination by using a street address, a city center, a place on the map or a point of interest (POI). The easiest way, however, is by voice.

1. Press the voice button . When prompted, say "Destination street address".
2. The system will ask you to say the full address and will display an example on screen.
3. You can then speak the address naturally, such as: One two three Main Street, Anytown.

You can also use the touchscreen to enter a destination and narrow your choices by city or street as you type.

The system offers from up to three different types of routes:

- » **Fastest:** Uses the fastest moving roads possible.
- » **Shortest:** Uses the shortest distance possible.
- » **Eco (EcoRoute):** Uses the most fuel efficient route.

SYNC® WITH MYFORD TOUCH®* (CONTINUED)



Climate

SYNC with MyFord Touch controls the temperature, airflow direction, fan speed, and activates other climate features, like heated front seats for you and your passenger.

Set your temperature

- Touch the lower-right blue corner on your touchscreen.
- Set your exact, desired temperature using the (+) or (-) buttons.



Entertainment

No matter how you store your music, SYNC makes it yours to enjoy when you're behind the wheel. Just press the lower-left, red corner of the touchscreen. From here, you can easily go between AM/FM, SiriusXM and other media sources.

Set your radio presets

- Touch the Entertainment corner on the touchscreen.
- Touch **FM**.

- Enter the desired station and touch **Enter**.

- Touch **Presets**, then touch and hold one of the memory preset buttons to save it. You'll hear a brief mute and the sound will return once the station is saved.

Bring in your own music

Gain access to any audio source by voice and even control how each operates, like changing radio stations, CD tracks or music on one of the following devices:

- USB
- **Bluetooth**® streaming
- SD card*
- Audio line in

Refer to the **MyFord Touch** chapter of your **Owner's Manual**, visit the website or call the toll-free number for more information. See the inside front cover of this guide for details.

*if equipped

CONVERTIBLE TOP*

Tips When Using Your Convertible Top

Do not store articles behind the rear seat. Articles stored in the convertible top stowage compartment may break the rear glass window when you open the top. The windows lower automatically when opening or closing the top. Do not lower the top when the top material is wet. Remove any leaves or debris on the outer surface of the top. The convertible top does not operate unless the vehicle is stationary or traveling under 3 mph (4.8 km/h).

Note: You must switch your ignition on to open or close the top. We recommend that you leave the engine running to prevent draining the battery.

Opening the Convertible Top

1. Bring the vehicle to a complete stop.
2. Unclamp the top from the windshield header by pulling the latch handle down and then rotating it clockwise.
3. Press and hold the convertible top switch on the overhead console until the windows are down completely and the top stores fully. The information display tells you when the top finishes opening and storing.

Closing the Convertible Top

1. Bring the vehicle to a complete stop.
2. Press and hold the convertible top switch on the overhead console until the windows are up completely and the top unfolds and moves forward toward the windshield header.

Note: Make sure you pull the latch handle down so it is in the fully open position before the top and the windshield header make contact.

3. Continue pressing the convertible top control until the top is flush with the windshield header. The information display tells you when the top finishes closing.

4. Pull down on the latch handle and rotate it counter-clockwise.

5. Once the top locks into place, press the latch handle up into the stowed position.



Note: If the top has been open for an extended period of time or if the temperature is low, the top material may shrink slightly. If this happens, pull and then rotate the latch handle slightly to fasten to the top. For more complete information, refer to the **Convertible Top** chapter of your **Owner's Manual**.

*if equipped



COMFORT/FUNCTION

Climate Controlled Front Seats*



Touch the heated seat symbol  to cycle through the various heat settings and off. More lights indicate warmer settings. Press the cooled seat symbol  to cycle through the various cooling settings and off. More lights indicate cooler settings.

Dual-zone Automatic Temperature Control*

Use the touchscreen to set an independent temperature for the front-seat passenger. Touch **Dual** and then + or - to adjust. Touch **Dual** again to switch the controls back to the driver's temperature setting.

Remote Start*

Use the remote start to start your engine.

1. Press the lock button  to lock all the doors.
2. Press the remote start button  twice within three seconds. The exterior lamps will flash twice.

Pony Projection Lights*

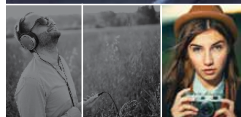
The lights are on the bottom of the mirror housings. This feature projects an image onto the ground a short distance from the vehicle with the illuminated entry and exit feature.

Rear Seat Access

Use the seatback release to fold the back of the front seat forward. This release handle is on the upper back of the front seat. The seatback has memory and locks automatically in the original position.

Reverse Sensing System*

Sounds a warning tone if there is an obstacle near the vehicle's rear bumper when the vehicle is in reverse (R) and is traveling less than 3 mph (5 km/h). The warning tone will increase in frequency as the object gets closer.



*if equipped

FUNCTION (CONTINUED)

Selectable Driving* and Steering Modes



Through a suite of sophisticated electronic vehicle systems, you can optimize ride comfort, steering, handling, powertrain response and sound. To change the settings, use the mode switch on the instrument panel. The selected mode lights in the information display. See the **Driving Aids** chapter of your **Owner's Manual** for complete details.

Driving modes*

- » **Normal** - Delivers a balanced combination of comfortable, controlled ride and confident handling. This mode provides an engaging drive experience and a direct connection to the road without sacrificing any of the composure demanded from your vehicle.

- » **Sport+** - Provides a sportier steering feel and throttle response. Sport mode is ideal for use during more spirited driving.

- » **Track** - Provides a performance driving experience. The engine responds directly to your inputs and takes on a more powerful tone. Use track mode when you desire pure performance.

- » **Snow/Wet** - Provides a confident handling driving experience during poor weather without sacrificing any of the composure demanded from your vehicle.

Steering modes

- » **Standard** - Default factory setting.
- » **Sport** - Slightly higher effort required for steering with more road force felt through the steering wheel.
- » **Comfort** - Slightly less effort required for steering with less road force felt through the steering wheel.

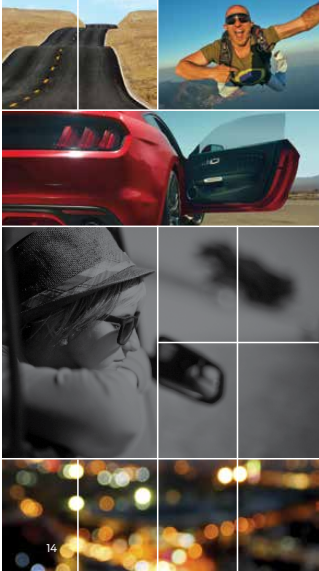
After selecting the desired setting, you may feel a soft feedback bump in the steering wheel when the changeover occurs.

Note: If your vehicle is equipped with the selectable drive modes feature, the steering feel will change when you select a new drive mode. You can override this automatic selection by pressing the steering button.

AdvanceTrac™*

The system automatically activates when you start your engine. The electronic stability control portion of the system is disabled when the transmission is in reverse (R) or, on some models, if you press and hold the stability control button for more than five seconds when you apply the brakes and the vehicle is at a stop. You can switch off the traction control portion of the system independently. See the **Stability Control** chapter of your **Owner's Manual** for details.

*if equipped



ESSENTIAL FEATURES

Fuel Tank Capacity

Depending on your engine size and type, your fuel tank size can vary. When equipped with the 2.3L EcoBoost engine, your vehicle has a 15.5 gallon (58.6L) fuel tank capacity. The 3.7L and 5.0L 32V Ti-VCT engines include a 16 gallon (60.6L) fuel tank capacity.

Use only "Regular" unleaded gasoline with an octane rating of 87 or higher. Do not use E85 fuels because your vehicle was not designed to run on fuels with more than 15% ethanol.

Easy Fuel® System

With this system, push to open the fuel door, insert the nozzle and begin fueling. It is self-sealing and therefore protected against dust, dirt, water, snow and ice. Wait 5-10 seconds from the time the refueling nozzle is shut-off until you remove the nozzle from the vehicle to allow residual fuel in the nozzle to drain into the tank. When using a portable fuel container, slowly insert the fuel funnel (located in the spare tire compartment), and pour the fuel into the funnel.

Note: Do not use aftermarket funnels as they will not work with the Easy Fuel system and may cause damage. Properly clean the funnel after each use.

**if equipped*

Blind Spot Information System (BLIS®) with Cross Traffic Alert*

BLIS aids you in detecting vehicles that may have entered the blind spot zone. The detection area is on both sides of the vehicle, extending rearward from the exterior mirrors to approximately 10 feet (3 meters) beyond the bumper. The system alerts you if certain vehicles enter the blind spot zone while driving. Cross traffic alert warns you of vehicles approaching from the sides when the transmission is in reverse (R).

Note: Visibility aids do not replace the need to watch where the vehicle is moving. Refer to the **Owner's Manual** for safety information, more details and system limitations.

Tire Pressure Monitoring System

Your vehicle illuminates a low tire pressure warning light (ⓘ) in your instrument cluster when one or more of your tires are significantly under-inflated.

**if equipped*



On-demand screen. It displays your current individual tire pressures. Refer to the **Inflating Your Tires** section in the **Wheels and Tires** chapter of your **Owner's Manual** for more information.

Manual Transmission Lockout*

Your manual transmission features a lockout feature that protects you from accidentally moving the transmission into reverse (R). To shift into reverse (R):

1. Press the clutch pedal to the floor to disengage the clutch.
2. Raise the collar below the gearshift knob up, then move the lever fully to the left, then forward.

Note: If you have trouble engaging the gear, return the gearshift to neutral (N) and then release the clutch. Repeat steps 1 and 2.



Roadside Assistance

Your new Ford vehicle comes with the assurance and support of 24-hour emergency roadside assistance.

To receive roadside assistance in the United States, call **1-800-241-3673**. In Canada, call **1-800-665-9006**.

15